



UN/CEFACT
Simple, Transparent and Effective Processes
For Global Commerce

REQUIREMENTS SPECIFICATION MAPPING (RSM)

Business Domain: Accounting

Business Process: Reporting

Document Identification : CEFACT/Forum/2009

Title: Reporting Message

UN/CEFACT International Trade and Business Processes Group: TBG12 – TBG18

Version: 1.11

Approval date: 01-09-2006

Release:

Document Summary

Document Item	Current Value
Document Title	Requirements Specification Mapping Reporting
Date Last Change	2011-03-17
Current Document Version	1.11
Status	Final
Document Description (one sentence summary)	Specification that describes the data model and targeted technology solutions for the reporting process

Contributors

Name	Organization
Alain BERNARD	NEURONICS Belgium
Alex PAJON	EIC Informatique France
Benoît MARCHAL	PINEAPPLE Soft Belgium
Bruno PREPIN	Predell Services France
Dominique FAVERIO	EDIFICAS France
Frédéric CHARDEL	Predell Services France
Frédérique LEBLOND	Ordre des experts-comptables France
Gaëlle CHERUY	AGRO EDI Europe
Gérard COLO	LOGIC SYSTEM France
Jan BERGSTRÖM	Alphabet AB – Stockholm Sweden
Michel LESOURD	EDIFICAS France
Olivier DE BONHOME	EDIFICAS Europe
Robert LEMENSE	EDIFICAS Belgium

Log of Changes

Issue No.	Date of Change	Changed By	Summary of Change
1.1	November 2009	TBG12-TBG18	Draft
1.6	November 2009	TBG12-TBG18	1 st Submission to ICG
1.7	October 2010	TBG12-TBG18	2 nd Submission to ICG
1.8	November 2010	TBG12	Minor editorial changes Change Message Assembly spreadsheet to change message name → “AAA_ Reporting Message V1”
1.9	December 2010	TBG12	infinite loop with AAA_ Report changed to 0..20
1.10	2010-12-28	TBG12	Change after revision ICG
1.11	2011-03-17	TBG12	Change after revision TBG17

TABLE OF CONTENTS

1	References document	4
2	Introduction	5
3	Objective	6
3.1	Definition of terms	8
3.2	Target technology solutions	9
4	Information payload to be implemented	10
4.1	Conceptual Data Model for the Reporting Message	10
4.2	Canonical Data Model for the Reporting Message	11
5	Business information entity reference.....	12
5.1	Basic Business Information Entities section	12
5.2	Aggregate Business Information Entities section.....	14
5.3	Association Business Information Entities	16
5.4	Restriction Enumerations (to be possibly submitted as Qualified data type).....	17
5.4.1	EDIFICASEU_OrganizationFunctionType_D10A.TXT.....	17
5.4.2	EDIFICASEU_FinancialInstitutionRoleType_D10A.TXT	17
5.4.3	EDIFICASEU_SoftwareUserType_D10A.TXT	17
5.4.4	EDIFICASEU_AmountWeightType_D10A.TXT	17
5.4.5	EDIFICASEU_PartyType_D10A.TXT	18
5.4.6	EDIFICASEU_PartyAccessRightsType_D10A.TXT.....	18
5.4.7	EDIFICASEU_AddressFormatType_D10A.TXT	18
5.4.8	EDIFICASEU_AdditionalPostponementType_D10A.TXT.....	18
5.4.9	EDIFICASEU_FinancialAccountType_D10A.TXT	21
6	Associated documentation.....	22
6.1	Core components UN/CEFACT Registry version used	22
6.2	Root Level Message Assembly.....	22

1 References document

- CEFACT/TMWG/N090R10 UN/CEFACTs Modeling methodology, November 2001
http://www.unece.org/cefact/umm/UMM_Revision_10_2001.zip
- CEFACT/TMG/N093 UN/CEFACT Modeling Methodology (UMM) User Guide
http://www.unece.org/cefact/umm/UMM_userguide_220606.pdf
- CEFACT/ICG/004 UN/CEFACT Forum - Operating Procedures between the TBG, ATG & ICG http://www.unece.org/cefact/documents/Forum_operating_procedures.pdf
- UN/CEFACT ISO/TS 15000-5 ebXML Core Components Technical Specification – Part 8 of the ebXML Framework, Version 2.01 (TRADE/CEFACT/2004/28)
http://www.unece.org/cefact/ebxml/CCTS_V2-01_Final.pdf
- CEFACT/ICG/005 UN/CEFACT Business Requirements Specification template
<http://www.uncefactforum.org/ICG/Documents/ICG%20Home/Business%20Requirements%20Specification%20V1r5%20approved.zip>
- CEFACT/ICG/006 UN/CEFACT Requirements Specification Mapping template version 1 September 2005
<http://www.uncefactforum.org/ICG/Documents/ICG%20Home/ICG%20requirements%20specification%20mapping%20V1R0%2020050928.zip>
- CEFACT/TBG/BS002/Revision – BRS Accounting Ledger Process version 1.1 August 2009
http://www1.unece.org/cefact/platform/download/attachments/6455492/BRS+accounting+Ledger+v1_1.doc
- TRADE/CEFACT/2008/MISC.1 Decision 08-9ECE/TRADE/C/CEFACT/2008/29/Add.5
- UN/CEFACT TBG17 Submission Template, v3pt14 - June 2009
- UN/CEFACT – Core Components Library version CCL 09A
<http://www.unece.org/cefact/codesfortrade/unccl/CCL09A.xls>
- OMG Unified Modeling Language Specification, Version 1.3 June 1999, and later
- BRS Reporting Message 1.5 – March 2011

2 Introduction

The current practice of exchange of business documents by means of telecommunications – usually defined as e-Business presents a major opportunity to improve the competitiveness of companies, especially for Small and Medium Enterprise (SME) whatever its size can be.

About all the functions within any entity provide input to accounting entries and accounting entries in turn will provide output towards aggregated figures from accounts.

Carrying on an initiative of EDIFICAS Europe, the European Expert Group 11 (EEG11) – Accounting and auditing – of eBES, started the discovery of elements for accounting entries in 2004. This task was inter alia based upon the ENTREC, CHACCO, INFENT and LEDGER Edifact messages.

The “Reporting” message is a recognized UN-Cefact standard included in CCL09B.

This first version of the Reporting Business Requirements Specification (BRS) has been presented for comments from the other regions. Comments received were considered and included when relevant.

After a period of public exposure TBG12 has drafted the final version of the BRS addressing comments received and forward for further processing through the UN/CEFACT Forum process with the goal of developing a UN/CEFACT standard Reporting document.

The purpose of this document is to define globally consistent Reporting processes for the worldwide accounting and auditing domains, using the UN/CEFACT Modelling Methodology (UMM) approach and Unified Modelling Language to describe and detail the business processes and transactions involved.

The structure of this document is based on the structure of the UN/CEFACT Requirements Specification Mapping (RSM) document reference CEFACT/ICG/006.

3 Objective

In conjunction with the BRS document (CEFACT/ICG/005), the purpose of this document is to provide a standard framework for the exchange of information for reporting.

The objective of this document is to standardize the information entities and the extraction business processes, (occasionally snippets only) used by the enterprises based on the National Nomenclature data model (to be developed) and on the Accounting with standard data models.

Companies, in public or private domain, more and more are going to systems who allow to obtain the key indicators necessary for the decision-making or their evaluation. For this reason, the **accounting**, in dynamic and privileged **distributor of information**, collects more information in order to be able to answer more quickly and to adapt to the request.

The company, place of exchanges, can live durably only by controlling these exchanges, by controlling flows of information with the suppliers, the customers, the lenders and by controlling all the elements relating to its inheritance and, of course, while being ensured of the positive results. **The accounting** provides the means because it is **essentially federator of information** to the service of the internal management of the company.

The mechanisms of collection and diffusion of accounting information are accompanied by a decompartmentalization of attributions of accounting: the accounting information system does not remain insulated any more. It is in the prolongation even confused with the other functions of the company: component of a more general information system, accounting treats data which all find their source in the other functions of the company: commercial, production, finance, etc. By way, it is located downstream from all the other functions of the company, without excluding only one from them.

"The objective of financial statements is to provide information about the financial position, performance and changes in financial position of an enterprise that is useful to a wide range of users in making economic decisions. [IAS 1.9] "¹

"The financial statements must "present fairly" the financial position, financial performance and cash flows of an entity. Fair presentation requires the faithful representation of the effects of transactions, other events, and conditions in accordance with the definitions and recognition criteria for assets, liabilities, income and expenses set out in the Framework. The application of IFRSs, with additional

1 "Presentation of Financial Statements" Standard IAS 1, International Accounting Standards Board. Accessed 24 June 2007.

disclosure when necessary, is presumed to result in financial statements that achieve a fair presentation." [IAS 1.15]¹

Reporting are intended to be comprehensible by readers who have "a reasonable knowledge of business and economic activities and accounting and who are willing to study the information diligently." The reporting may be used by these people for different reasons:

- Owners and directors ask reporting to make the economic decisions for the control of the entity. An analysis is then carried out on these reporting to provide a more detailed comprehension of the activities of the company. These analyses are also used as an element of the management's annual report to the shareholders;
- Employees need also these reports within the collective bargaining agreements (CBA), in the case of the labour unions for example to discuss promotion and rankings;
- Possible investors use the reporting to evaluate the possible investments in business. Analyses are often made in order to provide them the basis for making investment decisions;
- Financial institutions (banks and other lending companies) employ the reporting to decide the granting of new appropriations in agreement with floating capital;
- Government entities (tax authorities) need reporting to establish the accuracy of taxes and other duties declared and paid by a company;
- Suppliers who grant business credit require reporting to evaluate the creditworthiness of the business;
- Medias (such as financial newspapers) and general public are also interested in the reporting for a variety of reasons in particular for the market valuations.

This is why Reporting Message takes a significant place in the accounting system, with which it rests, in order to aggregate economic information of the company and to restore them with its economic and administrative partners.

The business document consists of a set of Business Information Entities (BIE), which are preferably taken from libraries of reusable business information entities, in particular those of the Reporting standard. The contents of the business document and the Business Information Entities are presented using class diagrams.

3.1 Definition of terms

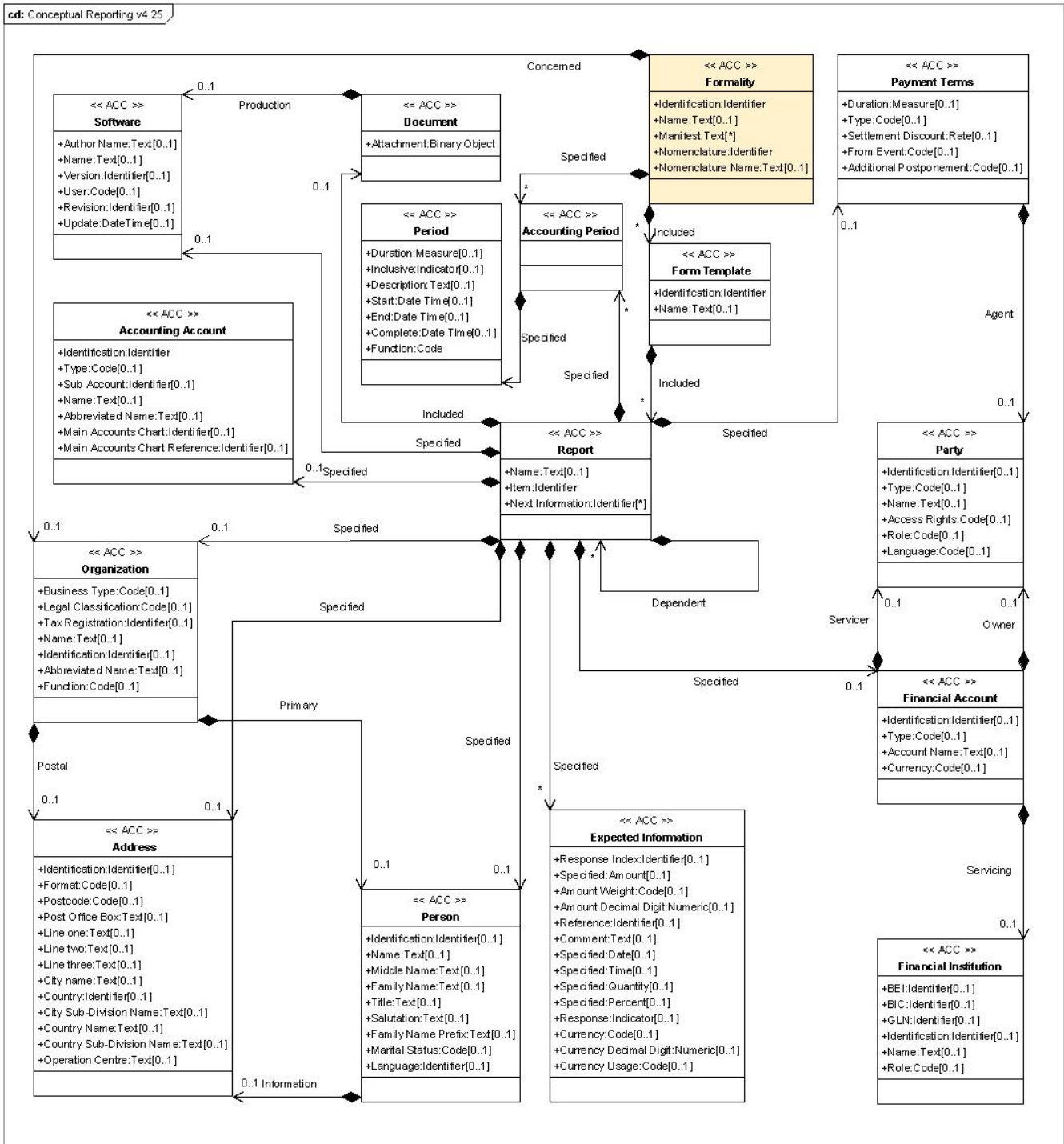
Term	Definition
Document	A document that establishes evidence for matter which requires certainty and confidence, such as accounting and audit.
Expected Information	A single data or a compilation of data anticipated to fill in an item in a report such as an amount and/or a percentage and/or a date and/or a comment.
Analysis	Methods which examine the standing of a company and its turnover, determine the extent to which it maintained its balance and give an opinion on its future prospects.
Floating capital	The floating capital is a measurement of the short-term solvency of the company and its capacity to finance its current exploitation and to refund its debts at the time when they become exigible.
Form Template	A compilation of gathered information for this form that is part of a formality
Formality	A compilation of gathered information to be remitted to official data collectors or interested parties, such as a tax or social return, statistical statement, report.
Reporting	A compilation of information which is pertinent to a specific subject or topic, such as an accounting report or report.

3.2 Target technology solutions

The canonical class diagram of the Reporting presented in this document should be used to generate the UN/CEFACT XML standard schema of the Reporting in accounting, statistic and audit domains. This RSM document together with the corresponding BRS document and the UN/CEFACT XML schema are intended to be the basis for the standard Reporting.

4 Information payload to be implemented

4.1 Conceptual Data Model for the Reporting Message



5 Business information entity reference

This section contains the list of all the Business Information Entities that are used within the canonical data model and are variations from the standard Core Components, included the UN/CEFACT Registry version 10A that served as the reference point.

5.1 Basic Business Information Entities section

This section identifies any restrictions that have to be applied to the BBIE in the context in which it is being used.

BBIE dictionary entry name	Data Type	Usage Rules	Core Component dictionary Entry Name	Content Component Restrictions			Supplementary component Restrictions		
				Restriction Type	Restriction Value	Expression Type	Supplementary Component Name	Supplementary Value	
AAA Report_ Accounting Account. Type. Code	Code. Type		Accounting Account. Type. Code	EDIFICASEU_AccountingAccountType_D09B.xsd					Responsible 210 Edificas Eu
AAA_ Period. Function. Code	Code. Type		Period. Function Type. Code	see UNCL 2005					Responsible 6 UNECE
AAA Report_ Organization. Business Type. Code	Code. Type		Organization. Business Type. Code	Nationally defined such as INSEE in France	Fr. NAF rev. 2 http://recherche.naf.insee.fr/SIRENET_Template/Accueil/template_page_accueil.html				e.g. Use case in France: 107 INSEE
AAA Report_ Organization. Legal Classification. Code	Code. Type		Organization. Legal Classification Type. Code	Nationally defined such as http://www.insee.fr/fr/methodes/default.asp?page=nomendatures/cj/cj.htm					e.g. Use case in France: 107 INSEE
AAA Report_ Organization. Function. Code	Code. Type		Organization. Function Type. Code	EDIFICASEU_OrganizationFunctionType_D10A.TXT see. Erreur ! Source du renvoi introuvable.	UN02000154				Responsible 210 Edificas Eu
AAA Report_ Financial Account. Type. Code	Code. Type		Financial Account. Type. Code	EDIFICASEU_FinancialAccountType_D10A.TXT see 5.4.9	UN02000168				Responsible 210 Edificas Eu
AAA Report_ Financial Account. Currency. Code	Code. Type		Financial Account. Currency. Code	ISO_ISO3AlphaCurrencyCode_20100407.xsd					Responsible 5 ISO
AAA Report_ Financial Institution. Role. Code	Code. Type		Financial Institution. Role. Code	EDIFICASEU_FinancialInstitutionRoleType_D10A.TXT See 5.4.2	UN02000156				Responsible 210 Edificas Eu
AAA Report_ Payment Terms. Type. Code	Code. Type		Payment Terms. Type. Code	see UNCL 4279 Payment terms type code qualifier					Responsible 6 UNECE

Requirements Specification Mapping Financial Reporting Message

BBIE dictionary entry name	Data Type	Usage Rules	Core Component dictionary Entry Name	Content Component Restrictions			Supplementary component Restrictions		
				Restriction Type	Restriction Value	Expression Type	Supplementary Component Name	Supplementary Value	
AAA Report _ Payment Terms. From Event. Code	Code. Type		Payment Terms. From Event. Code	see UNCL 2475 Event time reference code					Responsible 6 UNECE
AAA Report _ Payment Terms. Additional Postponement. Code	Code Type		Payment Terms. Postponement. Code	EDIFICASEU_AdditionalPostponementType_D10A.TXT See 0	UN02000163				Responsible 210 Edificas Eu
AAA Report _ Software. User Type. Code	Code. Type		Software. User Type. Code	EDIFICASEU_SoftwareUserType_D10A.TXT See 0	UN02000170				Responsible 210 Edificas Eu
AAA Report _ Expected Information. Amount Weight. Code	Code. Type		Expected Information. Amount Weight. Code	EDIFICASEU_AmountWeightType_D10A.TXT See 5.4.4	UN02000169				Responsible 210 Edificas Eu
AAA Report _ Expected Information. Currency. Code	Code. Type		Expected Information. Currency. Code	ISO ISO3AlphaCurrencyCode_20070618.xsd					Responsible 5 ISO
AAA Report _ Expected Information. Currency Usage. Code	Code. Type		Expected Information. Currency Usage. Code	see UNCL 6347 Currency usage code qualifier					Responsible 6 UNECE
AAA Report _ Party. Type. Code	Code. Type		Party. Type. Code	EDIFICASEU_PartyType_D10A.TXT See 0	UN02000157				Responsible 210 Edificas Eu
AAA Report _ Party. Access Rights. Code	Code. Type		Party. Access Rights. Code	EDIFICASEU_AccessRightsType_D10A.TXT See 0	UN02000171				Responsible 210 Edificas Eu
AAA Report _ Party. Role. Code	Code. Type		Party. Role. Code	see UNCL 3035					Responsible 6 UNECE
AAA Report _ Party. Language. Code	Code. Type		Party. Role. Code	ISO ISOAlpha3LanguageCode_20080305.xsd					Responsible 5 ISO
AAA Report _ Person. Marital Status. Code	Code. Type		Person. Marital Status. Code	see UNCL 3479					Responsible 6 UNECE
AAA Report _ Person. Language. Identifier	Code. Type			ISO ISOAlpha3LanguageCode_20080305.xsd					Responsible 5 ISO
AAA _ Address. Postcode. Code	Code. Type		Address. Postcode. Code	Nationally defined such as http://www.bpost.be/site/fr/residentiel/customerservice/search/postal_codes.html					e.g. Belgian Post
AAA _ Address. Format. Code	Code. Type		Address. Format. Code	EDIFICASEU_AddressFormatType_D10A.TXT See 0	UN02000158				Responsible 210 Edificas Eu
AAA _ Period. Inclusive. Indicator	Indicator. Type	Default value = False	Period. Inclusive. Indicator	Boolean True. False					
AAA Report _ Expected Information. Response. Indicator	Indicator. Type	Default value = True	Expected Information. Response. Indicator	Boolean True. True					

5.2 Aggregate Business Information Entities section

ABIE Business Term	Aggregate Core Component dictionary Entry Name	Inclusions (BBIEs to be included)	Exclusions (BBIEs to be excluded)	ASBIEs
AAA Report_ Accounting Account. Details	Accounting Account. Details	Identification. Identifier Type. Code Sub Account. Identifier Name. Text Abbreviated Name. Text Main Accounts Chart. Identifier Main Accounts Chart Reference. Identifier		
AAA_ Period. Details	Period. Details	Start. Date Time End. Date Time Duration. Measure Inclusive. Indicator Description. Text Complete. Date Time Function .Code		
AAA Report_ Accounting Period. Details	Accounting Period. Details			AAA Report_ Accounting Period. Specified. AAA_ Period
AAA Report_ Document. Details	Document. Details	Attachment. Binary Object		AAA Report_ Document. Production. AAA Report_ Software
AAA Report_ Organization. Details	Organization. Details	Tax Registration. Identifier Business Type. Code Legal Classification. Code Name. Text Identification. Identifier Abbreviated Name. Text Function. Code Social_ Identification. Identifier Fiscal_ Identification. Identifier Other_ Identification. Identifier		AAA Report_ Organization. Postal. AAA. Address AAA Report_ Organization. Primary. AAA Report_ Person
AAA_ Report. Details	Report. Details	Next Information. Identifier Name. Text Item. Identifier		AAA_ Report. Dependent. AAA_ Report
AAA Report_ Payment Terms. Details	Payment Terms. Details	Duration. Measure Type. Code Settlement Discount. Rate From Event. Code Additional Postponement. Code		AAA Report_ Payment Terms. Agent. AAA Report_ Party
AAA Report_ Financial Account. Details	Financial Account. Details	IBAN Identification. Identifier Type. Code Account Name. Text Currency. Code		AAA Report_ Financial Account. Servicer. AAA Report_ Party AAA Report_ Financial Account. Owner. AAA Report_ Party AAA Report_ Financial Account. Servicing. AAA Report_ Financial Institution
AAA Report_ Financial Institution. Details	Financial Institution. Details	BEI. Identifier BIC. Identifier GLN. Identifier Identification. Identifier Name. Text Role. Code		
AAA Report_ Software. Details	Software. Details	Author Name. Text Name. Text Version. Identifier User Type. Code Revision. Identifier Latest_Update. DateTime		
AAA Report_ Expected Information. Details	Expected Information. Details	Response Index. Identifier Specified. Amount Amount Weight. Code Amount Decimal Digit. Numeric		

Requirements Specification Mapping Financial Reporting Message

ABIE Business Term	Aggregate Core Component dictionary Entry Name	Inclusions (BBIEs to be included)	Exclusions (BBIEs to be excluded)	ASBIEs
		Reference. Identifier Comment. Text Specified. Date Specified. Time Specified. Quantity Specified. Percent Response. Indicator Currency. Code Currency Decimal Digit. Numeric Currency Usage. Code		
AAA Report_ Form Template. Details	Form Template. Details	Identification. Identifier Name. Text		AAA Report_ Form Template. Included. AAA_ Report
AAA Report_ Formality. Details	Formality. Details	Identification. Identifier Name. Text Manifest. Text Nomenclature. Identifier Nomenclature Name. Text		AAA Report_ Formality. Included. AAA Report_ Form Template AAA Report_ Formality. Concerned. AAA Report_ Organization AAA Report_ Formality. Specified. AAA Report_ Accounting Period
AAA_ Address. Details	Address. Details	Identification. Identifier Postcode. Code Line One. Text Line Two. Text Line Three. Text City Name. Text Country. Identifier City Sub-Division Name. Text Country Name. Text Country Sub-Division Name. Text Format. Code Post Office Box. Text Operation Center. Text		
AAA Report_ Party. Details	Party. Details	Identification. Identifier Type. Code Person Name. Text Access Rights. Code Role. Code Language. Code		
AAA Report_ Person. Details	Person. Details	Identification. Identifier Name. Text Middle Name. Text Family Name. Text Title. Text Salutation. Text Family Name Prefix. Text Language. Code Marital Status. Code		AAA Report_ Person. Information. AAA_ Address

5.3 Association Business Information Entities

This section identifies any all the ASBIEs where multiplicity restrictions will be applied.

ASBIE name	Multiplicity restriction	Additional comments
AAA_Report. Dependent. AAA_Report	0..*	This linked report could be dependent from zero to about 20 linked reports.
AAA_Report. Specified. AAA_Report_Expected Information	0..*	Expected Information repetition.
AAA_Report. Specified. AAA_Report_Accounting Period	0..*	Accounting Period repetition.
AAA_Report_Form Template. Included. AAA_Report	0..*	Linked Report repetition.
AAA_Report_Formality. Included. AAA_Report_Form Template	0..*	Reporting Form Template repetition.
AAA_Report_Formality. Concerned. AAA_Report_Organization	0..1	The Organization concerned by this formality
AAA_Report_Formality. Specified. AAA_Report_Accounting Period	0..*	Accounting Period repetition.
AAA_Report_Accounting Period. Specified. AAA_Period	1	Period limitation for accounting period.
AAA_Report_Document. Production. AAA_Report_Software	0..1	The document produced by the software.
AAA_Report. Specified. AAA_Report_Financial Account	0..1	The report specifies a financial account.
AAA_Report. Specified. AAA_Report_Person	0..1	The report specifies a responsible person.
AAA_Report. Specified. AAA_Address	0..1	The report specifies an address.
AAA_Report. Specified. AAA_Report_Software	0..1	The report specifies a software.
AAA_Report. Specified. AAA_Report_Organization	0..1	The report specifies an organization.
AAA_Report. Specified. AAA_Report_Accounting Account	0..1	The report specifies an accounting account.
AAA_Report. Included. AAA_Report_Document	0..1	The report included a document.
AAA_Report. Specified. AAA_Report_Payment Terms	0..1	The report specifies a payment terms.
AAA_Report_Payment Terms. Agent. AAA_Report_Party	0..1	The report specifies an agent party.
AAA_Report_Financial Account. Servicer. AAA_Report_Party	0..1	This payment financial institution specifies a servicer responsible party.
AAA_Report_Financial Account. Owner. AAA_Report_Party	0..1	This payment financial institution specifies an owner responsible party.
AAA_Report_Financial Account. Servicing. AAA_Report_Financial Institution	0..1	This payment financial institution specifies a servicing responsible party.
AAA_Report_Person. Information. AAA_Address	0..1	The person specifies a postal address.
AAA_Report_Organization. Postal. AAA_Address	0..1	The legal organization specifies a postal address.
AAA_Report_Organization. Primary. AAA_Report_Person	0..1	The legal organization specifies a responsible person.

5.4 Restriction Enumerations (to be possibly submitted as Qualified data type)

The codes lists used in the message Reporting may be either restricted enumeration of code values, or a limitation of codes used from UN-EDIFACT/UNCL maintained by UN-CEFACT, or from ISO official lists of codes, or are lists maintained by EDIFICAS EU when the code list was created for typical accounting purpose.

In the current RSM document the term “D08B” used as part of EDIFICAS EU codes lists name belongs to the standard UN-CEFACT versioning codification scheme. Qualified data types can be downloaded from

<http://www.edificas.eu/index.php/eng/Download/Code-lists>.

5.4.1 EDIFICASEU_OrganizationFunctionType_D10A.TXT

AUD	Audit Firm	The code indicates an audit firm.
LAU	Legal Audit Firm	The code indicates a legal audit firm.
	Center of rural economy	
CER	Firm	The code indicates a center of rural economy firm.
EXC	Chartered accountant Firm	The code indicates a chartered accountant firm.
5	Management Chartered Center	The code indicates a Management Chartered Center.
6	Management Chartered Association	The code indicates a Management Chartered Association.

5.4.2 EDIFICASEU_FinancialInstitutionRoleType_D10A.TXT

S	Settlement agent	The code is a settlement agent.
I	Intermediary	The code is an intermediary.

5.4.3 EDIFICASEU_SoftwareUserType_D10A.TXT

I	Intermediate	The code indicates an intermediate.
R	Recipient	The code indicates a recipient.
S	Sender	The code indicates a sender.

5.4.4 EDIFICASEU_AmountWeightType_D10A.TXT

D	Decimalized amount	The amount is decimalized.
R	Rounded amount	The amount is rounded
T	Truncated amount	The amount is truncated
3	Thousand	The amount expresses thousand of the currency unit.
6	Million	The amount expresses million of the currency unit.
9	Billion	The amount expresses billion of the currency unit.

5.4.5 EDIFICASEU_PartyType_D10A.TXT

DIR	Direction	The code indicates a Direction.
SER	Service	The code indicates a Service.
SEC	Section	The code indicates a Section.
DEP	Department	The code indicates a Department.
BRA	Branch	The code indicates a Branch.

5.4.6 EDIFICASEU_PartyAccessRightsType_D10A.TXT

D	Denied	The code indicates denied access rights.
P	Prohibited	The code indicates prohibited access rights.
R	Restricted	The code indicates restricted access rights.
U	Unlimited	The code indicates unlimited access rights.

5.4.7 EDIFICASEU_AddressFormatType_D10A.TXT

1	Fiscal Format	The code is a fiscal format.
2	Legal Format	The code is a legal format.
3	Postal Format	The code is a postal format.

5.4.8 EDIFICASEU_AdditionalPostponementType_D10A.TXT

0	Cash	The code indicates cash.
1	1 day	The code indicates one day.
2	2 days	The code indicates two days.
3	3 days	The code indicates three days.
4	4 days	The code indicates four days.
5	5 days	The code indicates five days.
6	6 days	The code indicates six days.
7	7 days	The code indicates seven days.
8	8 days	The code indicates eight days.
9	9 days	The code indicates nine days.
10	10 days	The code indicates ten days.
11	11 days	The code indicates eleven days.
12	12 days	The code indicates twelve days.
13	13 days	The code indicates thirteen days.
14	14 days	The code indicates fourteen days.
15	15 days	The code indicates fifteen days.
16	16 days	The code indicates sixteen days.
17	17 days	The code indicates seventeen days.
18	18 days	The code indicates eighteen days.
19	19 days	The code indicates nineteen days.
20	20 days	The code indicates twenty days.
21	21 days	The code indicates twenty one days.
22	22 days	The code indicates twenty two days.
23	23 days	The code indicates twenty three days.
24	24 days	The code indicates twenty four days.
25	25 days	The code indicates twenty five days.
26	26 days	The code indicates twenty six days.
27	27 days	The code indicates twenty seven days.
28	28 days	The code indicates twenty eight days.

Requirements Specification Mapping Financial Reporting Message

29	29 days	The code indicates twenty nine days.
30	30 days	The code indicates thirty days.
30M	30 days end of month	The code indicates thirty days end of month.
30M5	30 days end of month postponed on the 5	The code indicates thirty days end of month postponed on the 5.
30M10	30 days end of month postponed on the 10	The code indicates thirty days end of month postponed on the 10.
30M15	30 days end of month postponed on the 15	The code indicates thirty days end of month postponed on the 20.
30M20	30 days end of month postponed on the 20	The code indicates thirty days end of month postponed on the 25.
30M25	30 days end of month postponed on the 25	The code indicates thirty days end of month postponed on the 30.
60M	60 days end of month	The code indicates sixty days end of month.
60M5	60 days end of month postponed on the 5	The code indicates sixty days end of month postponed on the 5.
60M10	60 days end of month postponed on the 10	The code indicates sixty days end of month postponed on the 10.
60M15	60 days end of month postponed on the 15	The code indicates sixty days end of month postponed on the 20.
60M20	60 days end of month postponed on the 20	The code indicates sixty days end of month postponed on the 25.
60M25	60 days end of month postponed on the 25	The code indicates sixty days end of month postponed on the 30.
90M	90 days end of month	The code indicates ninety days end of month.
90M5	90 days end of month postponed on the 5	The code indicates ninety days end of month postponed on the 5.
90M10	90 days end of month postponed on the 10	The code indicates ninety days end of month postponed on the 10.
90M15	90 days end of month postponed on the 15	The code indicates ninety days end of month postponed on the 20.
90M20	90 days end of month postponed on the 20	The code indicates ninety days end of month postponed on the 25.
90M25	90 days end of month postponed on the 25	The code indicates ninety days end of month postponed on the 30.
120M	120 days end of month	The code indicates one hundred and twenty days end of month.
120M5	120 days end of month postponed on the 5	The code indicates one hundred and twenty days end of month postponed on the 5.
120M10	120 days end of month postponed on the 10	The code indicates one hundred and twenty days end of month postponed on the 10.
120M15	120 days end of month postponed on the 15	The code indicates one hundred and twenty days end of month postponed on the 20.
120M20	120 days end of month postponed on the 20	The code indicates one hundred and twenty days end of month postponed on the 25.
120M25	120 days end of month postponed on the 25	The code indicates one hundred and twenty days end of month postponed on the 30.
150M	150 days end of month	The code indicates one hundred and fifty days end of month.
150M5	150 days end of month postponed on the 5	The code indicates one hundred and fifty days end of month postponed on the 5.
150M10	150 days end of month postponed on the 10	The code indicates one hundred and fifty days end of month postponed on the 10.
150M15	150 days end of month postponed on the 15	The code indicates one hundred and fifty days end of month postponed on the 20.
150M20	150 days end of month postponed on the 20	The code indicates one hundred and fifty days end of month postponed on the 25.
150M25	150 days end of month postponed on the 25	The code indicates one hundred and fifty days end of month postponed on the 30.
180M	180 days end of month	The code indicates one hundred and eighty days end of month.
180M5	180 days end of month postponed on the 5	The code indicates one hundred and eighty days end of month postponed on the 5.

Requirements Specification Mapping Financial Reporting Message

180M10	180 days end of month postponed on the 10	The code indicates one hundred and eighty days end of month postponed on the 10.
180M15	180 days end of month postponed on the 15	The code indicates one hundred and eighty days end of month postponed on the 20.
180M20	180 days end of month postponed on the 20	The code indicates one hundred and eighty days end of month postponed on the 25.
180M25	180 days end of month postponed on the 25	The code indicates one hundred and eighty days end of month postponed on the 30.
210M	210 days end of month	The code indicates two hundred and ten days end of month.
210M5	210 days end of month postponed on the 5	The code indicates two hundred and ten days end of month postponed on the 5.
210M10	210 days end of month postponed on the 10	The code indicates two hundred and ten days end of month postponed on the 10.
210M15	210 days end of month postponed on the 15	The code indicates two hundred and ten days end of month postponed on the 20.
210M20	210 days end of month postponed on the 20	The code indicates two hundred and ten days end of month postponed on the 25.
210M25	210 days end of month postponed on the 25	The code indicates two hundred and ten days end of month postponed on the 30.
240M	240 days end of month	The code indicates two hundred and forty days end of month.
240M5	240 days end of month postponed on the 5	The code indicates two hundred and forty days end of month postponed on the 5.
240M10	240 days end of month postponed on the 10	The code indicates two hundred and forty days end of month postponed on the 10.
240M15	240 days end of month postponed on the 15	The code indicates two hundred and forty days end of month postponed on the 20.
240M20	240 days end of month postponed on the 20	The code indicates two hundred and forty days end of month postponed on the 25.
240M25	240 days end of month postponed on the 25	The code indicates two hundred and forty days end of month postponed on the 30.
270M	270 days end of month	The code indicates two hundred and seventy days end of month.
270M5	270 days end of month postponed on the 5	The code indicates two hundred and seventy days end of month postponed on the 5.
270M10	270 days end of month postponed on the 10	The code indicates two hundred and seventy days end of month postponed on the 10.
270M15	270 days end of month postponed on the 15	The code indicates two hundred and seventy days end of month postponed on the 20.
270M20	270 days end of month postponed on the 20	The code indicates two hundred and seventy days end of month postponed on the 25.
270M25	270 days end of month postponed on the 25	The code indicates two hundred and seventy days end of month postponed on the 30.
300M	300 days end of month	The code indicates three hundred days end of month.
300M5	300 days end of month postponed on the 5	The code indicates three hundred days end of month postponed on the 5.
300M10	300 days end of month postponed on the 10	The code indicates three hundred days end of month postponed on the 10.
300M15	300 days end of month postponed on the 15	The code indicates three hundred days end of month postponed on the 20.
300M20	300 days end of month postponed on the 20	The code indicates three hundred days end of month postponed on the 25.

Requirements Specification Mapping Financial Reporting Message

300M25	300 days end of month postponed on the 25	The code indicates three hundred days end of month postponed on the 30.
330M	330 days end of month	The code indicates three hundred and thirty days end of month.
330M5	330 days end of month postponed on the 5	The code indicates three hundred and thirty days end of month postponed on the 5.
330M10	330 days end of month postponed on the 10	The code indicates three hundred and thirty days end of month postponed on the 10.
330M15	330 days end of month postponed on the 15	The code indicates three hundred and thirty days end of month postponed on the 20.
330M20	330 days end of month postponed on the 20	The code indicates three hundred and thirty days end of month postponed on the 25.
330M25	330 days end of month postponed on the 25	The code indicates three hundred and thirty days end of month postponed on the 30.
360M	360 days end of month	The code indicates three hundred and sixty days end of month.
360M5	360 days end of month postponed on the 5	The code indicates three hundred and sixty days end of month postponed on the 5.
360M10	360 days end of month postponed on the 10	The code indicates three hundred and sixty days end of month postponed on the 10.
360M15	360 days end of month postponed on the 15	The code indicates three hundred and sixty days end of month postponed on the 20.
360M20	360 days end of month postponed on the 20	The code indicates three hundred and sixty days end of month postponed on the 25.
360M25	360 days end of month postponed on the 25	The code indicates three hundred and sixty days end of month postponed on the 30.
1D	End of the next first day decade	The code indicates the end of the next first day decade.
2D	End of the next second day decade	The code indicates the end of the next second day decade.
3D	End of the next third day decade	The code indicates the end of the next third day decade.

5.4.9 EDIFICASEU_FinancialAccountType_D10A.TXT

1	Saving	The code is saving.
2	Checking	The code is checking.

6 Associated documentation

6.1 Core components UN/CEFACT Registry version used

The Core components UN/CEFACT Registry version used for this document is version 1.0 and Core Components Library version 09B, together with the TBG17 Core component library submission for the ABIEs, BBIEs and ASBIEs of the Accounting Ledger approved by TBG17.

6.2 Root Level Message Assembly

The root element of the Reporting Message is the ABIE UN01007098 “Reporting_ Formality. Details”.

The Reporting Message Assembly template is attached here.



CCMA_Reporting_V1
.10.xls